



# BIG 6

CHALLENGE

## ŠÍRAVA 2024

TEST YOUR LIMITS...

#BUDETOFER

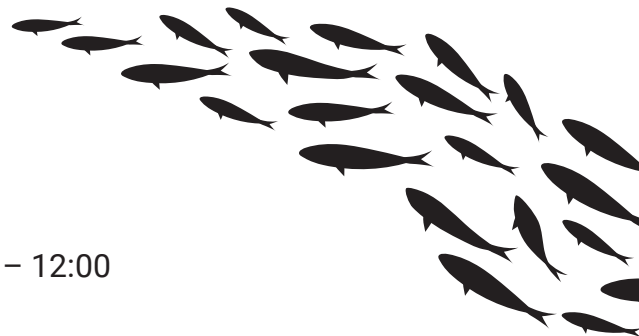


## 1. General Rules

- a. Official name of the competition: Šírava Big 6 Challenge (hereinafter as „competition“)
- b. Organizer of the competition: MO SRZ Medzilaborce ul. Májová 734/40, Medzilaborce 068 01
- c. Competition period: 01.06.2024-08.06.2024
- d. Registration period: 31.05.2024 09:00 – 15:00
- e. Competition venue: Zemplínska šírava Water Reservoir
- f. Opening ceremony – registration: Dolina guesthouse
- g. GPS coordinates: 48°47'48.30"N - 21°58'30.75"E
- h. Official web site of the competition: [www.siravskasestka.com](http://www.siravskasestka.com)
- i. Official facebook site of the competition: Šírava Big 6 Challenge
- j. Official Instagram profile of the competition: siravabig6challenge
- k. Šírava Big 6 Challenge is an international carp fishing competition.
- l. Official language of the competition is Slovak and English. The competition rules are available in both the Slovak and the English language. In case of potential discrepancies between the interpretation of the original (Slovak) version and the English translation, the Slovak version is considered valid.
- m. Official currency of the competition is euro (EUR).
- n. The entry fee is 1 500 EUR/team.
- o. Number of teams is 56.

## 2. Time schedule

- > Registration of competitors: 31.05.2024 09:00 – 15:00
- > Opening ceremony of the competition: 31.05.2024– 10:00
- > Peg draw: 31.05.2024– 16:00
- > Peg occupying: 01.06.2024 from 06:00
- > Start of the competition: 01.06.2024 12:00
- > End of the competition: 08.06.2024 08:00
- > Closing ceremony and the prize giveaway: 08.06.2024 – 12:00



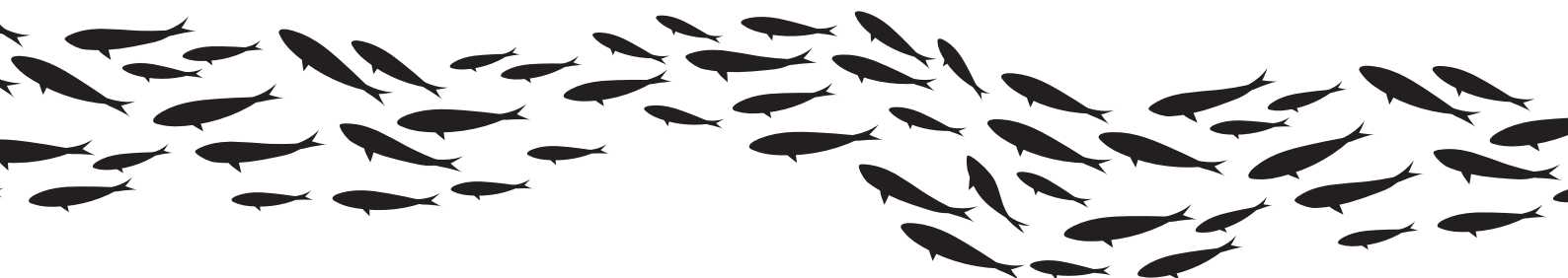


## 3. Registration terms

- a. The organizer of the competition Šírava Big 6 Challenge aims to preserve the international character of the competition, therefore a limited quota for each nationality was set.
- b. Registration for the competition must be carried out using an online registration form on the following website: [www.siravskasestka.com](http://www.siravskasestka.com)
- c. The organizer will send a confirmation of receiving the competition application to the registered e-mail address. Accepted teams will be contacted by the organizer and will receive a bank account number for the entry fee payment.
- d. Teams registration will be launched on .....
- e. Selection of teams is an exclusive right of the organizer, fully left to his discretion (free consideration). There is no obligation to explain a rejection or an acceptance.
- f. A team that cancels its registration after paying the participation fee will have to pay a service fee of 100 EUR. As of 01.03.2024, it will not be possible to refund the entry fee, but the team can find a replacement team. After the entry fee has been paid by the new team, the team that cancelled its registration can request a refund of the entry fee, excluding the service fee.

## 4. On-site registration

- a. Registration takes place at the Dolina guest-house
- b. Registration is possible only if the competitors have all the necessary documents; the process ends with each participant signing a completely filled-out registration form. Each competitor is required to identify himself with a valid identity document: (identity card / passport).
- c. Participants confirm that they have read and accept the rules of the competition with their signature; in-addition, they accept that in case of any disputes they will follow the impartial decisions of the arbitrators.
- d. Each participant receives a wristband that they have to wear during the entire competition.
- e. A team that fails to register properly loses its right to start in the competition and its entry fee is fully forfeited in favor of the organizer.





## 5. Referees

- > The main referee appointed by the organizer of the competition will be responsible for the course and fairness of the competition.

### Referees structure:

- > Main referee:
- > Sector referee - responsible for the weighing in the sector.
- > Assistant referee - weighing assistant to the sector referee -
- > Each sector will have at least one english-speaking referee

## 6. Peg draw

Pegs will be drawn in two rounds:

- f. The first round takes place already during registration. Designated team member draws a number, which indicates the order of drawing pegs (for example, the team that draws number 10 will be the tenth team to draw peg). If the team fails to register within the designated time, it will proceed to the draw as the last one.
- g. In the second round, the peg is drawn.
- h. It is prohibited to occupy the peg before 01.06.2024 - 06:00 hrs.

## 7. Teams

- a. Each team consists of a minimum of 3 and a maximum of 4 full-featured competitors.
- b. Persons older than 18 years of age or persons younger than 18 years of age with the written consent of a legal representative may register for the race.

## 8. Fish care

- a. Each team fishes on 4 rods, whereas each rod can only have 1 leader with one single hook.
- b. A maximum of 2 boats are permitted per team.
- c. Each team must have at least 3 floating weight slings in which they can secure the fish until weighing. The use of traditional fish sacks is prohibited. The competitors are responsible for the safety of fish from the catch until the weighing.
- d. A maximum of one fish can be stored in one weight sling.
- e. Each team must have at least 2 large carp landing nets (minimum shoulder size 1 m) and 2 cradle mats (minimal size of 60x100 cm). The use of fish mats is mandatory in the boats



too. Furthermore, the use of disinfection is mandatory for every fish. Improper use of tools that ensure the care and protection of the fish will result in a yellow card.

- f. A weighing tripod is mandatory for all teams.

## 9. The use of boats

- a. In order to ensure the safety of the competitors, the condition of the boats that the competitors will use and their equipment will be checked by the sector referee at the peg, according to the technical requirements and the list of mandatory boat equipment.
- b. Only the boats that have been inspected and labelled by the sector referee may be used.
- c. After the inspection, the sector referee issues a certificate proving that the boat includes all the required equipment and is in a satisfactory condition. Each boat will also receive a security seal with a unique identification mark after the inspection by the sector referee, removal of this seal is prohibited for the duration of the competition.
- d. The organizer have a right to carry out random boats inspections at any given time before or during the competition. Any detected deficiencies may result in an immediate disqualification.
- e. The boat must not be longer than 5 m and shorter than 2,7 m, only electric motors can be used in the competition.
- f. A maximum of 2 persons are permitted on one boat.
- g. Mandatory equipment for the boats:
  - oars
  - 2 life vests complying with the EN 395, 396, 399 or EN 12402-5 with the whistle and reflective elements
  - an anchor with a minimum weight of 10 kg
  - 10 m long rope with tow ring
  - horn
  - lights - 2 pcs per boat
  - container for pouring water from the boat
- h. It is the duty of every person during the entire competition to wear a properly fitted and fastened life vest before getting into the boat and during the subsequent sailing to the waters. Violation of this rule will result in a yellow card and a 12-hour suspension of all fishing related activities and in further cases in a disqualification.
- i. The boat must be securely anchored.
- j. Sleeping in the boat is strictly prohibited.
- k. During the entire competition, 2 boats per team are permitted to be on the water, but in all such cases there must be one person on the shore (violation of this rule will result in a 12-



hour suspension of all fishing related activities).

- l. Sector referee must be informed before the boat change.
- m. Boats moving on the water surface during the night must be illuminated (headlight or navigation lights, 2 pcs). Violation of this rule will result in a yellow card and a 12-hour suspension of all fishing related activities, further cases of violation will result in an immediate disqualification.
- n. Both boats of all teams will be equipped with a GPS tracking device, which will be installed by the sector referee and will be secured with a security seal with a serial number. The organizer will monitor the movement of the boats using this device during the entire duration of the competition.

## 10. Other rules

- a. It is prohibited to illuminate the water surface with a high performance reflectors for a longer periods of time during the entire competition . Furthermore, it is prohibited to disturb other competitors with lamps and laser devices. The peg must be illuminated during the entire night. Competitors are free to use the headlamps without restrictions.
- b. The use of live baits and traps is prohibited. Only boilies and pellets can be used as baits. Feeding is allowed only using particles that are harmless to health, except for the tiger nut. The use of tiger nut is prohibited.
- c. In case that the referee finds out that there were more than the permitted 4 rods used, the given team will be immediately disqualified.
- d. The fish hooked before the end of the competition must be reported to the referee until 08:00 hrs and will be counted towards the final result after verifying the departure time on the GPS device.
- e. Bait limit is 120 kg including particle.
- f. The use of fish finders during the competition is permitted.
- g. GPS locators will be loaned to the teams upon the refundable deposit payment of 150 EUR per piece.
- h. The race organizer reserves the right to change the marking of sectors before the start of the competition.

## 11. Fishing rules

- a. Only competitors, organizers and staff determined by the organizer are permitted at the competition venue.
- b. If a team´s boat enters the neighbouring team´s sector, the sector referee, together with the main referee and the administration member responsible for the GPS coordinates monitoring will review the situation and the sector referee will then announce the decision regarding the violation of the rules to both teams, who must then fully respect this decision.



- c. The peg will be determined by 4 GPS coordinates.
- d. Only one member of the team may leave the peg.
- e. There must be one person on the shore in all cases.
- f. A maximum of 4 stick buoys per team can be placed on the water. These must be removed after the end of the competition.
- g. Only luminous stick buoys are permitted.
  
- h. The use of drop off rigs with lead is strictly prohibited. In-line systems with spent lead are permitted for casting only. Violation of this rule leads to an immediate disqualification.
  
- i. It is strictly prohibited to stay outside of the area marked by 4 GPS coordinates. Furthermore, it is strictly prohibited to feed, use fish finders, and cast outside of this area. Any competitor violating this rule will be warned (a yellow card – a 12-hour suspension of all fishing related activities) and in further cases disqualified (a red card). The team is responsible for the correct definition of these 4 GPS coordinates! After the beginning of the competition, all teams have a maximum of 3 hours to define these precisely. After this time, the GPS devices will become functional and the potential penalties for crossing the sector boundaries will come into effect. Any fish caught in an unauthorized manner (outside of the team's sector) during the violation of this rule will not be added to the results.
- j. It is prohibited to cross the sector boundaries even while playing the fish!
- k. Random mounting distance checks will be performed during the competition.
- l. Everyone must respect the decisions of sector referees in all cases of disagreements related to the sector boundaries.
- m. The use of bait boats is strictly prohibited during the entire competition.
- n. In the event of a boat ban, it is allowed to cast and feed using waders to the waist height, but the use of a life vest is mandatory.
- o. It is allowed to bring ashore a fish caught from the boat for photographic purposes using the following way:
  - > After conquering the carp, it is placed in the carp mat
  - > Fish in the landing net must not be lifted, carried or taken to the mat on the shore without using a floating weight slings.
  - > Any transport of fish in the landing net is strictly prohibited.
  - > Any violation of this rule will result in a yellow card and a 12-hour suspension of all fishing related activities.
- p. When a reported possible rule violation by other team is not justified, the reporting team will receive a yellow card and a 12-hour suspension of all fishing related activities.



## 12. Sectors and vehicles

- a. Each team is liable for keeping it's peg clean and for protecting the environment. In addition, teams must leave the site in the same condition as they have received it. After the end of the competition, all teams have to leave the venue by 12:00 hrs at the latest.
- b. Setting fire is strictly prohibited. The use of camping gas cookers is permitted.
- c. Camping and building bivouacs is permitted only in the area designated by the organizer. In any case, it is mandatory to follow the referee's orders.
- d. Competitors will park their vehicles only in areas designated by the organizer. Competitors are not permitted to drive their vehicles in the competition venue during the competition.
- e. Waste is to be collected by the competitors using the closable plastic bags.
- f. Competitors are permitted to receive visitors from sunrise to sunset after consulting the referee.

## 13. Weighing rules

- a. The organizers provide a nonstop continuous weighing during the competition.
- b. Competitors have to actively cooperate during the process of weighing and taking photos.
- c. In case of catching a fish, competitors contact the given sector referee.
- d. From the moment the fish is caught until weighing, it has to be kept in the floating weight slings in at least 1 meter deep water. It is strictly forbidden to tie a fish to the shore (in such cases a yellow card with a 12-hour suspension of all fishing related activities follows).
- e. Weighing can only be executed by the referee using a scale provided by the organizer.
- f. One member of the given team, a referee and one member of the neighbouring team are present during the weighing of the fish for catch approval purposes. If the requested neighbouring team is not willing to approve the catch by it's presence and signature, it has to suspend fishing for 4 hours.
- g. Weighing documentation (catch time, team name, weight of caught fish) is confirmed and signed by a member of one of the neighbouring teams.
- h. Competitors are responsible for checking the accuracy of the weighing documentation data.
- i. After the official weighing, each fish will be photographed as follows: The photo taken by the referee takes precedence over other photos taken for private purposes. After the photograph is taken, the fish is released in the presence of the referee and the member of





the neighbouring team.

- j. In case of discrepancies between the weighing data of the competitor on one hand and the referee on the other hand, the referee's data will be considered valid.
- k. After the weighing process is completed, the referee sends a written documentation and photos to the organizer's headquarters for registering.
- l. In any case, the safety of the fish is the highest priority. Therefore, take photos and release the fish with the utmost caution.
- m. After the weighing process is completed, the fish may be released by the competitor under the supervision of the referee or the member of the neighbouring team.

## 14. Evaluation

- a. Only a carp weighing 10 kg and more are counted in.
- b. The overall winner of the competition is the team with the heaviest weight of 6 fish. In case of a tie, the team with the bigger fish wins. If the weight of the biggest fish of both teams is the same, the weight of the second biggest fish decides.

## 15. Prizes

- a. Prizes for „6 heaviest fish“:
  - 1st place: 7 000 €
  - 2nd place: 5 000 €
  - 3rd place: 4 000 €
- b. Prize for the biggest fish: 1 500 €
- c. Additional sector prizes: (6 sectors are evaluated)
  - 1st place: 800 €
- d. Fish of the Day (Saturday-Friday)
- e. Attention! Each team can win only one prize, except for the biggest fish prize. If there are unexpectedly no catches in the sector, the first three prizes are determined by drawing of the teams in the sector.
- f. The race organizer reserves the right to change the prize money depending on the number of teams.





## 16. Objections

- a. If the competing team discovers and reports a violation of these rules, it is advisable to document it by means of a video recording or a photo.
- b. Any team can raise objections against the violation of these rules during the competition, but no later than 15 minutes after the end of the competition. Filing a protest is subjected by a deposit of 200 EUR.
- c. In case the protest was found justified, the deposit of 200 EUR will be returned.
- d. In case the protest was not found justified, the deposit of 200 EUR will not be returned and the organizer is entitled to keep it as a contractual penalty.

## 17. Force majeure

- e. In case that the competition cannot take place due to unexpected events (force majeure), the paid amount of the participation fee is returned and the organizer transfers the funds back to the bank account from which they were transferred. Except for the previously stated reasons, the already paid participation fee (starting fee) is not subjected for refundation, even in the event of the team's withdrawal from the competition for any reasons.
- f. The following will be considered as force majeure by the organizer: measures ordered by the authorities due to the pandemic, unsatisfactory water conditions, sudden deterioration of the water quality due to external pollution confirmed by the authorities, etc.

## 18. Disqualification

- a. In case of disqualification, any partial results of the team are subjected to annulation as well. The disqualified team stops fishing immediately.
- b. If there is a person in the boat which is not an official team member, the team is disqualified immediately.
- c. Improper use of the boat and sailing without a life vest leads to disqualification.
- d. The use of boats during the boat ban results in immediate disqualification (exception from the rule: if a boat ban is announced while the competitor is on the water, he must return to the shore as soon as possible).
- e. Any attempt to bribe the referees, or attempts to include a fish that was not caught by the team to the results, or attempts to weigh the same fish more than once, will result in an immediate disqualification and a report to the police.
- f. Boats moving at night must be illuminated. Violation of this rule results in a warning - a 12-



hour suspension of all fishing related activities, in further cases in disqualification.

- g. Improper storing of fish and mishandling of the catch results in disqualification.
- h. It is prohibited to use lead fishing weights. Violation of this rule results in a warning - a 12-hour suspension of all fishing related activities, in further cases in disqualification.
- i. After a warning is issued, the team is penalized with a 12-hour penalty that starts after the last rod is pulled out. Fishing related activities are prohibited during the sentence!
- j. The second warning means an immediate disqualification from the competition (a red card). After being disqualified, the team must immediately leave their sector and the competition area. The results of the team are annulled.
- k. A removal, or any attempts to remove (or any intentional damage of) the GPS device that is secured by a safety seal on the boat results in an immediate disqualification.
- l. Violations of the rules that are reported or observed by the organizers will be immediately investigated and, depending on the severity, may lead to disqualification without the right to refund of the entry fee and other payments. The organizer reserves the right to an immediate (during the competition) or additional (after the competition) disqualification and return of any awards in all cases where regulations are violated.
- m. Swimming in the water reservoir is strictly prohibited during the entire competition. First violation will result in a yellow card, second violation will result in an immediate disqualification.
- n. Receiving two yellow cards means immediate disqualification.

## 19. Liabilities

- a. The Organizer is not responsible for any damage to the health or property of the competitors.
- b. By signing the registration form, the competitor agrees with the rules of the Šítava big 6 challenge (Šírava's six) competition.
- c. The GPS device received from the organizers must be returned undamaged after the competition. In case the GPS was not returned or it was returned damaged, the deposit paid for this device is not returned.

## 20. Marketing and media

- a. Competing teams will support the work of the media team designated by the organizer and will assist with conducting interviews taking photos and shooting videos.
- b. By signing the registration form, the competitors take into consideration and agree that their

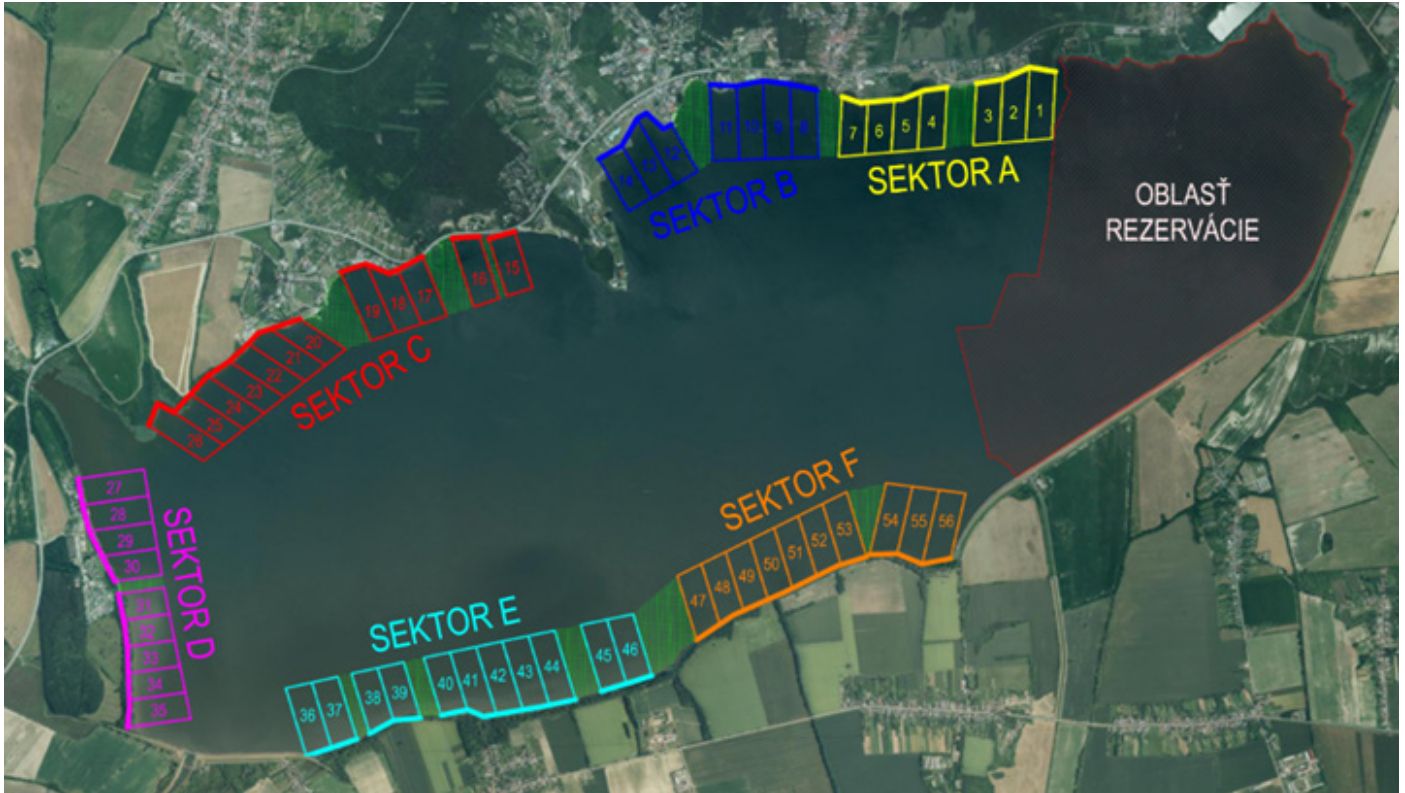


# BIG 6

# CHALLENGE

photos and videos taken during the competition may be published by the media.

## Preliminary map of the sectors distribution



**Follow us**



**siravabig6challenge**



**Šírava Big 6 Challenge**



**[www.siravskasestka.com](http://www.siravskasestka.com)**



## Organizational team



MO SRZ Medzilaborce  
Mgr. Matúš Halagan  
+421 905 947 877



Authorized person  
Ondrej Goga  
+421 905 966 030



Dominika Opáľková  
+421 950 567 148



Milan Baňas  
+421 915 603 007



Jakub Vardžík  
+421 907 039 315



Emil Obitko  
+421 918 663 253



[info@siravskasestka.com](mailto:info@siravskasestka.com)



# ŠÍRAVA 2024

TEST YOUR LIMITS...